

# AWDis



# OUR COLORS

 <b>01</b>	 <b>02</b>	 <b>03</b>	 <b>04</b>	 <b>05</b>
French Navy	Oxford Navy	Royal Blue	Airforce Blue	Sapphire Blue
 <b>06</b>	 <b>07</b>	 <b>08</b>	 <b>09</b>	 <b>10</b>
Sky Blue	Hawaiian Blue	Seafoam	Cornflower Blue	Peppermint
 <b>11</b>	 <b>12</b>	 <b>13</b>	 <b>14</b>	 <b>15</b>
Jade	Bottle Green	Olive Green	Dusty Green	Kelly Green
 <b>16</b>	 <b>17</b>	 <b>18</b>	 <b>19</b>	 <b>20</b>
Lime Green	Hot Chocolate	Caramel Toffee	Desert Sand	Nude
 <b>21</b>	 <b>22</b>	 <b>23</b>	 <b>24</b>	 <b>25</b>
Sherbet Lemon	Vanilla Milkshake	Sun Yellow	Mustard	Gold
 <b>26</b>	 <b>27</b>	 <b>28</b>	 <b>29</b>	 <b>30</b>
Orange Crush	Burnt Orange	Sunset Orange	Red Hot Chilli	Fire Red
 <b>31</b>	 <b>32</b>	 <b>33</b>	 <b>34</b>	 <b>35</b>
Burgundy	Purple	Lavender	Magenta Magic	Hot Pink
 <b>36</b>	 <b>37</b>	 <b>38</b>	 <b>39</b>	 <b>40</b>
Dusty Pink	Baby Pink	Mint	Peach Sorbet	Jet Black
 <b>41</b>	 <b>42</b>	 <b>43</b>	 <b>44</b>	 <b>45</b>
Black Smoke	Charcoal	Steel Grey	Heather Grey	Moondust Grey



WE  
ARE  
**COLOR**



# CONTENTS

## ESSENTIALS

JHA001	College Hoodie	page 13
JHA074	Tapered Track Pant	page 13
JTA001	AWDis T	page 17
JHA030	College Sweat	page 19
JHA080	Campus Shorts	page 20
JHA050	College Zoodie	page 23
JHY001	Youths College Hoodie	page 24
JHY030	Youths College Sweat	page 25
JHA101	Urban Heavyweight Hoodie	page 29

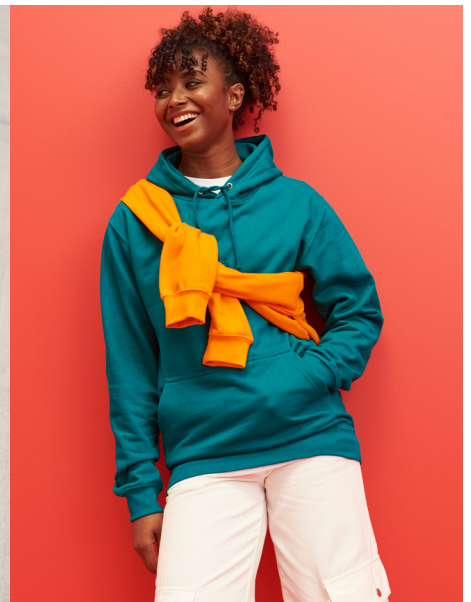
## COLLEGIATE

JHA003	Varsity Contrast Hoodie	page 33
JHA043	Letterman Jacket	page 35
JHY043	Youths Letterman Jacket	page 35
JHA046	Sophomore 1/4 Zip Sweat	page 37
JHA009	Baseball Hoodie	page 38
JCA001	AWDis Cool T	page 41
JCA005	Women's Cool T	page 42
JCY001	Youths Cool T	page 42
JCA002	Long Sleeve Cool T	page 43

## FASHION

JHA021	Cross Neck Hoodie	page 47
JHA011	Epic Print Hoodie	page 48
JHA014	Camo Hoodie	page 49
JHA017	Surf Hoodie	page 50
JHA016	Women's Cropped Hoodie	page 51
JHA035	Women's Cropped Sweat	page 52
JHY004	Youths Electric Hoodie	page 54
JHA004	Electric Hoodie	page 55
JCA038	Women's Cool Cowl Neck	page 56
JCA037	Cool Cowl Neck	page 56
JCA077	Women's Cool Printed Legging	page 57
JCA070	Women's Cool Workout Legging	page 57

Color Guide	page 58
Fabric Guide	page 60
Fit Guide	page 62
Print Guide	page 64





# WE ARE

# AWDis

## OUR STORY

Established in the USA in 2017, we're a one stop shop for fashion led basics and customizable apparel. Whether it's individuals marking special moments, crafting unique brands, or forming tight-knit sports clubs and teams, AWDIs stands as a reliable partner. We cater to schools and educational campuses, teams, and even large corporations—because expressing identity knows no bounds when AWDIs is in the picture.

## OUR PRODUCTS

The offering of color, quality and printability in our blanks means we continue to provide endless possibilities. From college and university to sports and casual wear, we've got something for every occasion.

## WHY CHOOSE AWDIS

Doing the right thing runs through the heart of everything we do, and that's why we work so closely with our global partners to do what we can to make the world a better place. In 2022, we removed all virgin plastic from our packaging and replaced it with 100% recycled bags. For 2023, we have gone a step further and removed 80% of our packaging completely. Where we cannot remove packaging, we are transferring to 100% certified compostable bags, reducing our environmental impact significantly.

At the heart of our ethos lies the values of family and community. Our product range is designed to allow for expression of identity, giving our customers the canvas to push and explore the boundaries of creativity.

**WE LIVE IN COLOR, RANGE, STYLE AND PRINTABILITY AND WE'LL HELP YOU STAND OUT FROM THE CROWD.**



**WE ARE  
COLOR  
WE ARE  
AWDis**







**JTA001**  
Jet Black

# COMBED & RINGSPUN JTA001

**JHA080**  
Jet Black

**JHA050**  
Royal Blue  
Page 23

**JTA001**  
Heather Grey  
Page 17

**JHA080**  
Heather Grey  
Page 20

# ESSENTIALS

Explore our Essentials, where simplicity is key. Each product is crafted to enhance your daily style, ensuring you're well-prepared for any occasion. From timeless basics to functional staples, these pieces form the foundation of a well-rounded wardrobe.

**JTA001**  
Fire Red  
Bottle Green  
Page 17



**JHA001**  
Kelly Green  
Nude  
Page 13





1	2	3	4	5	6	7	8 NEW	9 NEW	10	11	12	13	14	15	16	17	18	19	20	21 NEW	22	23
24	25	26	27	28	29	30	31	32	33	34	35	36	37	40	41	42	43	44	45 NEW	46	47	48

Sun Yellow

Jet Black



**NEW COLORS JHA001**  
**COLLEGE HOODIE**

80% Ringspun Cotton / 20% Polyester\*  
8.3oz



Scan for  
more info

**JHA074**  
**TAPERED TRACK PANT**

80% Ringspun Cotton / 20% Polyester\*  
8.3oz

02 40 44



Scan for  
more info

\* Heather, Black Smoke and Charcoal fabrications may vary. Please scan QR code for details

# WE ARE COLOR

**JHA030**  
Desert Sand  
Page 19

**JCA001**  
Magenta  
Magic  
Page 41

**JHA050**  
Royal Blue  
Page 23



# WE ARE STYLE

**JTA001**  
Airforce Blue  
Page 17

**JCA002**  
Electric  
Orange  
Page 43

**JHA001**  
Steel Grey  
Page 13

**JCA005**  
Hot Pink  
Page 42



Fire Red

Bottle Green





# LET THE QUALITY & COMFORT STAND OUT

An elevated basic, this premium T is made with 100% combed ring spun cotton providing unmatched comfort, quality and printability.

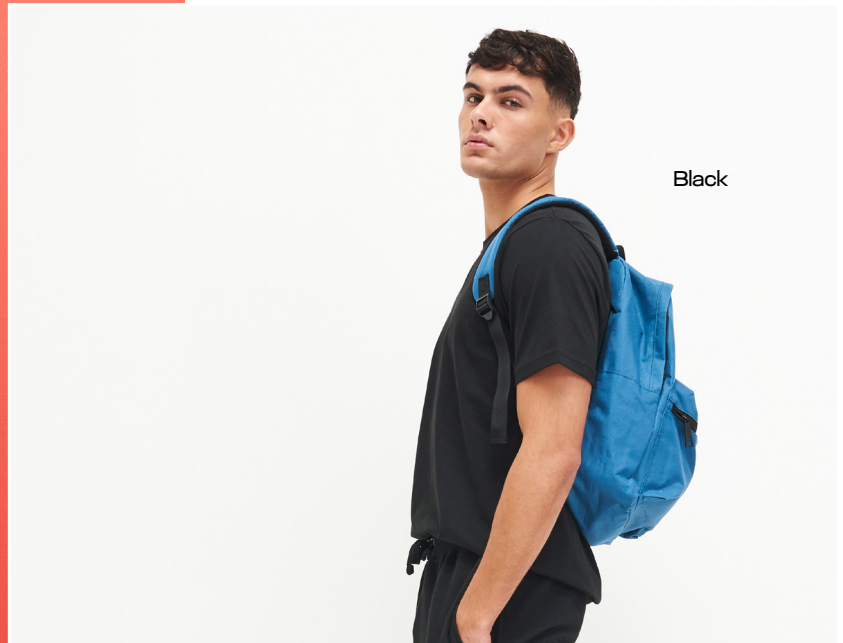
## NEW STYLE **JTA001** AWDIS T

100% Combed Ringspun Cotton\*  
5.3oz



Scan for more info

2	3	4	6	10	11	12	13	14	19
20	22	30	31	33	37	40	42	44	47



Black



Airforce Blue

\* Heather fabrications may vary.  
Please scan QR code for details



Sun  
Yellow

\* Heather, Black Smoke and Charcoal fabrications may vary.  
Please scan QR code for details

1	2	3	4	5	6	7	8 NEW	9 NEW	10	11	12	13	14	15	16	17	18	19	20	21 NEW	22	23
24	25	26	27	28	29	30	31	32	33	34	35	36	37	40	41	42	43	44	45 NEW	46	47	48

# JHA030 **NEW COLORS** COLLEGE SWEAT

80% Ringspun Cotton / 20% Polyester\*  
8.3oz



Scan for  
more info



Desert  
Sand



Airforce  
Blue

Red Hot  
Chilli



**JHA043**  
Jet Black /  
White  
Page 35

Orange  
Crush



Vanilla  
Milkshake

Hot  
Chocolate



**JHA014**  
Grey Cam  
Page 49

Jet  
Black



**JTA001**  
Airforce Blue  
Page 17

Heather  
Grey



**JTA001**  
Jet Black  
Page 17

Jet  
Black

# JHA080

## CAMPUS SHORTS

80% Ringspun Cotton / 20% Polyester\*  
8.3oz

40 44



Scan for  
more info



**JHA050**  
Heather Grey  
Page 23

**JTA001**  
Bottle Green  
Page 17

Heather  
Grey

\* Heather fabrications may vary.  
Please scan QR code for details



**WE  
ARE  
PRINT**



Oxford  
Navy

Burgundy

**JTA001**  
Burgundy

**JTA001**  
White  
Page 17

**JHA074**  
Oxford  
Navy

# CHOOSE YOUR OWN STYLE

## JHA050

### COLLEGE ZOODIE

80% Ringspun Cotton / 20% Polyester\*  
8.3oz

2 3 30 31 40 42 44



Scan for more info



Royal Blue

Fire Red



Heather Grey



Jet Black

Jet Black

JHA074  
Jet Black

\* Heather fabrications may vary.  
Please scan QR code for details

**NEW COLORS** **JHY001**  
YOUTHS COLLEGE  
HOODIE

80% Ringspun Cotton / 20% Polyester\*  
8.3oz

Sky Blue



Scan for  
more info

Purple



# JHY030 **NEW COLORS** YOUTHS COLLEGE SWEAT

80% Ringspun Cotton / 20% Polyester\*  
8.3oz



Scan for  
more info

Bottle  
Green



Fire  
Red



- 2
- 3
- 6 NEW
- 12
- 30
- 31 NEW
- 32 NEW
- 37
- 40
- 42 NEW
- 44
- 47

\* Heather fabrications may vary.  
Please scan QR code for details

# NEW STYLES JHA101 & JTA001



These new styles are made with luxury fabrics and are perfect for any occasion. Available in a fantastic range of colors.



# BUILT FOR EVERYDAY

Our heavyweight hoodie is the perfect premium hood, providing warmth and durability. Our JHA101 is a relaxed fit and has a cotton face perfect for printing.

Arctic  
White

Charcoal



# JHA101 **NEW STYLE**

## URBAN HEAVYWEIGHT HOODIE

70% Ringspun Cotton / 30% Polyester\*  
10oz

2 19 40 42 44 47



Scan for  
more info



Heather  
Grey



Arctic  
White



Desert  
Sand



Desert  
Sand

\* Heather fabrications may vary.  
Please scan QR code for details



**JHA003**  
Sky Blue /  
Arctic White  
**Page 33**

# COLLEGIATE

From classic essentials to trendsetting pieces, our collegiate section celebrates the dynamic energy and diverse tastes of campus fashion. Whether you're navigating lectures, social events, or study sessions, our collegiate collection ensures you stay on-point with the latest trends.

**JHA043**  
Royal Blue /  
Heather Grey  
**Page 35**



**JHA043**  
Hot Pink /  
Heather Grey  
**Page 35**

A young man with short dark hair and hoop earrings is crouching on a white background. He is wearing a bright blue hooded sweatshirt with white drawstrings and a white t-shirt underneath. He is also wearing beige cargo pants with elastic cuffs and white sneakers. He is looking directly at the camera with a neutral expression.

Royal Blue /  
Arctic White

# COLLEGE STYLE





Royal Blue /  
Arctic White



Fire Red /  
Jet Black



Sky Blue /  
Arctic White

**JCA070**  
Jet Black  
Page 57

**JHA003**  
**VARSITY**  
**CONTRAST HOODIE**

80% Ringspun Cotton / 20% Polyester\*  
8.3oz



Scan for  
more info



Heather Grey /  
French Navy

**JHA080**  
Heather Grey  
Page 20

\* Heather fabrications may vary.  
Please scan QR code for details

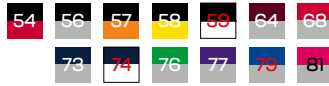
Hot Pink /  
Heather Grey

Royal Blue /  
Heather Grey



# JHA043 LETTERMAN JACKET

70% Ringspun Cotton / 30% Polyester\*  
9.8oz



Scan for  
more info

# JHY043 YOUTH LETTERMAN JACKET

70% Ringspun Cotton / 30% Polyester\*  
9.8oz



Scan for  
more info

Jet Black /  
White



Oxford Navy /  
Heather Grey



\* Heather fabrications may vary.  
Please scan QR code for details

WE



COLLEGE

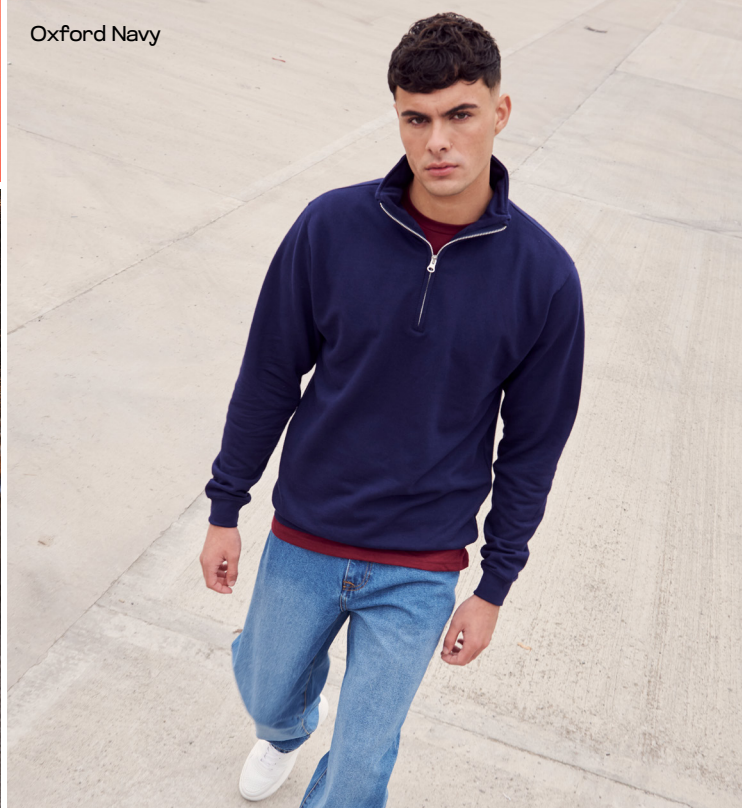
ARE

AWD<sup>is</sup>

Jet Black



Oxford Navy



Charcoal



Charcoal



# JHA046 SOPHOMORE 1/4 ZIP SWEAT

80% Ringspun Cotton / 20% Polyester\*  
8.3oz

2 40 42



Scan for  
more info

\* Heather fabrications may vary.  
Please scan QR code for details

# JHA009 BASEBALL HOODIE

80% Ringspun Cotton / 20% Polyester\*  
8.3oz

54 65 72



Scan for  
more info



Heather Grey /  
Jet Black



Jet Black /  
Fire Red



Heather Grey /  
Jet Black

JHA074  
Heather  
Grey  
Page 13

\*Heather fabrications may vary.  
Please scan QR code for details

# WE ARE SPORTS

Our sportswear is built to help you push your limits. Our goal is to provide garments that assist your performance while helping you stand out from the rest. Available in color, style and size options that leaves no team, or team member out.



Hawaiian Blue



Electric Pink



French Navy

Airforce Blue





Electric  
Pink

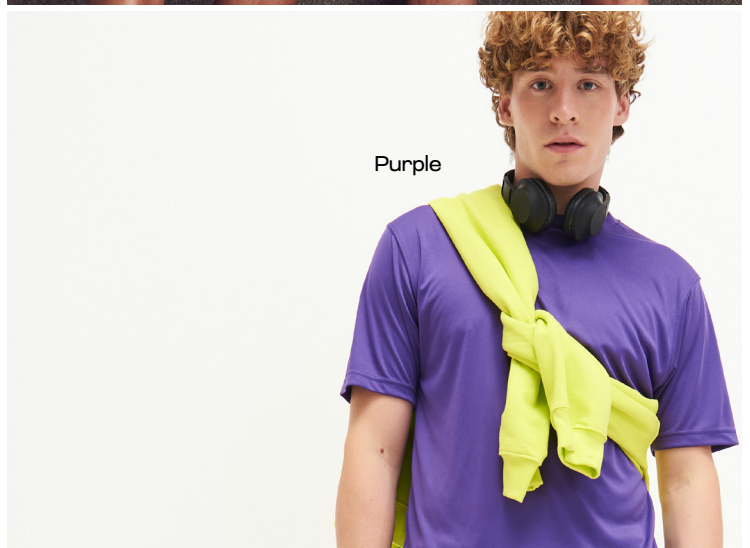


Magenta  
Magic

Sapphire  
Blue



Purple



Purple

**JCA001** *NEW COLORS*  
**AWDIS COOL T**

100% Polyester  
4.1oz

1	2	3	4	5	6	7	11	12	13	15
16	19	23	25	26	29	30	31	32	34	35
38 NEW	39 NEW	40	42	44	47	88	89	90	91	



Scan for  
more info



French Navy

# JCY001 YOUTHS COOL T

100% Polyester  
4.1oz



Scan for more info

2	3	6	15	30
32	40	42	44	47
88	89	90	91	

Sky Blue



# JCA005 WOMEN'S COOL T

100% Polyester  
4.1oz



Scan for more info

1	3	5	15	23
30	35	40	47	



French Navy



Electric Pink



Mint

## JCA002 **NEW COLORS** LONG SLEEVE COOL T

100% Polyester  
4.1oz



Scan for more info

1	3	6 NEW	7 NEW	23	30	38 NEW
39 NEW	40	42	47	88	91	



French Navy

**JCA070**  
Jet Black  
Page 57

**JHA017**  
Surf Ocean  
Page 50

**JHA035**  
Heather Grey  
Page 52

**JHA011**  
Jet Black  
Page 48



# FASHION

Indulge in the world of timeless elegance and contemporary trends in the AWDiS Fashion section.

Stay stylish wherever you are, as our fashion pieces are designed to compliment your dynamic lifestyle.

**JCA038**  
Electric  
Pink  
Page 56



**JHA004**  
Electric  
Yellow  
Page 55

Peppermint

Jet Black

**JHA074**  
Heather  
Grey

**JHA074**  
Jet Black  
Page 13

**CHOOSE  
YOUR  
OWN  
STYLE**

**JHA021**

**CROSS NECK HOODIE**

70% Ringspun Cotton / 30% Polyester\*  
9.8oz

2 10 37 40 44



Scan for  
more info

Baby Pink



\* Heather fabrications may vary.  
Please scan QR code for details



Jet Black

## JHA011

### EPIC PRINT HOODIE

80% Ringspun Cotton / 20% Polyester  
8.3oz

40



Scan for  
more info



# JHA014

## CAMO HOODIE

70% Ringspun Cotton / 30% Polyester  
8.3oz



Scan for  
more info

Green  
Camo



JHA080  
Jet Black  
Page 20



# IF YOU LOVE IT... WEAR IT

Looking for pastel toned hoodie with a fashion edge, our Surf Hoodie is inspired by coastal colors and is available in 5 retail shades.

## JHA017 SURF HOODIE

80% Ringspun Cotton /  
20% Polyester  
8.3oz

49 50 51 52 53



Scan for  
more info

Surf  
Purple

Surf  
Yellow



# JHA016

## WOMEN'S CROPPED HOODIE

80% Ringspun Cotton / 20% Polyester\*  
8.3oz

36 40 44 47



Scan for more info

Dusty Pink

Jet Black

JHA074  
Heather Grey  
Page 13

\* Heather fabrications may vary.  
Please scan QR code for details



Arctic White

**JHA074**  
Heather Grey  
Page 13

# JHA035

## WOMEN'S CROPPED SWEAT

80% Ringspun Cotton / 20% Polyester\*  
8.3oz

36 40 44 47



Scan for more info



Dusty Pink



Jet Black



Jet Black

\* Heather fabrications may vary. Please scan QR code for details

# WE ARE FASHION



**JHY004**  
Electric  
Yellow



**JHA004**  
Electric  
Yellow



**JHA004**  
Electric  
Yellow



**JHY004**  
YOUTHS ELECTRIC HOODIE

85% Polyester / 15% Ringspun Cotton  
8.3oz

88 91



Scan for  
more info

# JHA004

## ELECTRIC HOODIE

85% Polyester / 15% Ringspun Cotton

8.3oz

88 91



Scan for more info

Electric Yellow

JCA038  
Electric Pink  
Page 56

## JCA037

### COOL COWL NECK

92% Polyester / 8% Elastane  
6.2oz

82 83 84 85 86



Scan for  
more info



Electric  
Pink



Black Slate  
Melange

## JCA038

### WOMEN'S COOL COWL NECK

92% Polyester / 8% Elastane  
6.2oz

82 83 85 86 87



Scan for  
more info



## JCA070

### WOMEN'S COOL WORKOUT LEGGING

86% Polyester/ 14% Elastane  
8oz

40



Scan for  
more info

JCA005  
Hot Pink

JCA005  
Hawaiian  
Blue

JCA070  
Jet Black

JCA038  
Electric  
Pink

JCA077  
City Nights

## JCA077

### WOMEN'S COOL PRINTED LEGGING

92% Polyester / 8% Elastane  
8oz

92 93



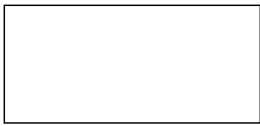
Scan for  
more info

# COLOR GUIDE

				
French Navy PMS 5395C	Oxford Navy PMS 533C	Royal Blue PMS 661C	Airforce Blue PMS 5405C	Sapphire Blue PMS 300C
				
Sky Blue PMS 644C	Hawaiian Blue PMS 2995C	Seafoam PMS 16-4612 TCX	Cornflower Blue PMS 659C	Peppermint PMS 3242C
				
Jade PMS 329C	Bottle Green PMS 554C	Olive Green PMS 448C	Dusty Green PMS 16-5804 TCX	Kelly Green PMS 347C
				
Lime Green PMS 368C	Hot Chocolate PMS 440C	Caramel Toffee PMS 18-1031 TCX	Desert Sand PMS 7502C	Nude PMS 4665C
				
Sherbet Lemon PMS 120C	Vanilla Milkshake PMS 7499C	Sun Yellow PMS 109C	Mustard PMS 1245C	Gold PMS 136C
				
Orange Crush PMS 1505C	Burnt Orange PMS 173C	Sunset Orange PMS 179C	Red Hot Chilli PMS 1945C	Fire Red PMS 200C
				
Burgundy PMS 7421C	Purple PMS 2617C	Lavender PMS 2563C	Magenta Magic PMS 258C	Hot Pink PMS 214C
				
Dusty Pink PMS 500CP	Baby Pink PMS 1895C	Mint PMS 12-4608 TCX	Peach Sorbet PMS 15-1433 TCX	Jet Black BLACK
				
Black Smoke PMS 447CP	Charcoal PMS 447C	Steel Grey PMS 425C	Heather Grey COOL GRAY 5C	Moondust Grey PMS 428CP



Ash  
PMS COOL GRAY 2 UP



Arctic White  
WHITE



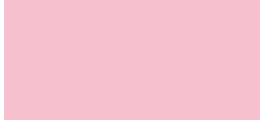
PFD (Prepared for Dye)



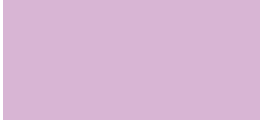
Surf Blue  
PMS 2121C



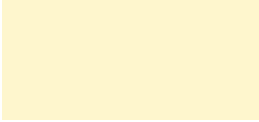
Surf Ocean  
PMS 2225C



Surf Pink  
PMS 495C



Surf Purple  
PMS 530C



Surf Yellow  
PMS 7499C



Jet Black / Fire Red  
PMS BLACK / 200C



Jet Black / Gold  
PMS BLACK / 136C



Jet Black / Heather Grey  
PMS BLACK / COOL GRAY 5C



Jet Black / Orange Crush  
PMS BLACK / 1505C



Jet Black / Sun Yellow  
PMS BLACK / 109C



Jet Black / White  
PMS BLACK / WHITE



French Navy / Fire Red  
PMS 5395C / 200C



French Navy / Heather Grey  
PMS 5395C / COOL GRAY 5C



French Navy / Sky Blue  
PMS 5395C / 644C



Burgundy / Charcoal  
PMS 7421C / 447C



Burgundy / Heather Grey  
PMS 7421C / COOL GRAY 5C



Charcoal / Jet Black  
PMS 447C / BLACK



Charcoal / Orange Crush  
PMS 447C / 1505C



Fire Red / Arctic White  
PMS 200C / WHITE



Fire Red / Heather Grey  
PMS 200C / COOL GRAY 5C



Fire Red / Jet Black  
PMS 200C / BLACK



Heather Grey / Fire Red  
PMS COOL GRAY 5C / 200C



Heather Grey / French Navy  
PMS COOL GRAY 5C / 5395C



Heather Grey / Jet Black  
PMS COOL GRAY 5C / BLACK



Oxford Navy / Heather Grey  
PMS 533C / COOL GRAY 5C



Oxford Navy / White  
PMS 533C / WHITE



Kelly Green / Arctic White  
PMS 347C / WHITE



Kelly Green / Heather Grey  
PMS 347C / COOL GRAY 5C



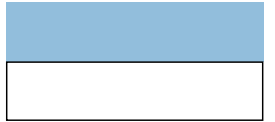
Purple / Heather Grey  
PMS 2617C / COOL GRAY 5C



Royal Blue / Arctic White  
PMS 661C / WHITE



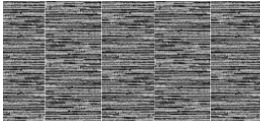
Royal Blue / Heather Grey  
PMS 661C / COOL GRAY 5C



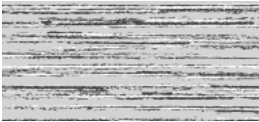
Sky Blue / Arctic White  
PMS 644C / WHITE



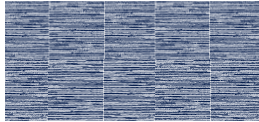
Hot Pink / Heather Grey  
PMS 214C / COOL GRAY 5C



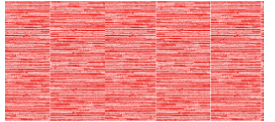
Black Slate Melange  
PMS 426CP



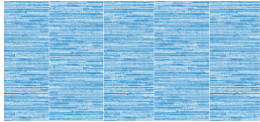
Grey Melange  
PMS COOL GRAY 8C



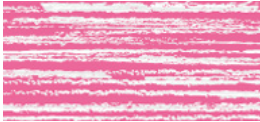
Navy Melange  
PMS 2965C



Red Melange  
PMS 186CP



Royal Melange  
PMS 2945C



Electric Pink Melange  
PMS 16-1735 TPC



Electric Orange  
PMS XG ORANGE C



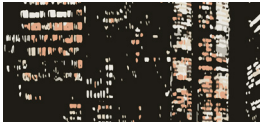
Electric Green  
PMS 13-0340 TN



Electric Pink  
PMS 16-1735 TPC



Electric Yellow  
PMS 13-0630 TN



City Nights



Fashion Green Camo



Green Camo



Grey Camo

# FABRIC GUIDE



**College**

80% Ringspun Cotton,  
20% Polyester  
8.3oz

JHA001/Y, JHA003, JHA009, JHA011, JHA016  
JHA030/Y, JH035, JHA046, JHA050, JHA074,  
JHA080



**Camo**

70% Ringspun Cotton,  
30% Polyester  
8.3oz

JHA014



**Surf**

80% Ringspun Cotton,  
20% Polyester  
8.3oz

JHA017



**Street**

70% Ringspun Cotton,  
30% Polyester  
9.8oz

JHA021, JHA043/Y



**10oz**

70% Ringspun Cotton 30% Polyester  
10oz

JHA101



**Electric**

85% Polyester 15% Ringspun Cotton  
8.3oz

JH004/Y



### Neoteric Smooth

100% Polyester  
4.1oz

JCA001/Y, JCA002, JCA005



### Dynamic Cool

92% Polyester, 8% Elastane  
6.2oz

JCA037, JCA038



### Cool Flex

86% Polyester, 14% Elastane  
8oz

JCA070, JCA077



### 180 T

100% Combed Ringspun Cotton  
5.3oz

JTA001

# FIT GUIDE

THIS GUIDE REFERS TO BODY MEASUREMENTS. FOR SPECIFIC STYLE MEASUREMENTS PLEASE USE INDIVIDUAL BRAND STYLE SPECS

To Fit measurements are a guide only. To Fit measurements are body measurements. Brand measurements are garment measurements. Each brand has specialised measurements per style therefore fit will vary depending on brand and styling. A size M will be able to wear a size M across all brands however fit will vary depending on the style of the garment. Please see Brands spec sheets for specific garment measurements.

## MEN'S / UNISEX CLOTHING

	XXS	XS	S	M	L	XL	XXL	3XL	4XL	5XL	6XL	7XL
TO FIT CHEST CM	81	86	91	101	111	121	132	142	152	157	162	167
167	32	34	36	40	44	48	52	56	60	62	64	66
TO FIT WAIST CM	26-28	28 - 30	30 - 32	32 - 34	34 - 36	36 - 38	38 - 40	40 - 42	42 - 44	44 - 46	46-48	48-50
TO FIT WAIST INCHES	66-71	71 - 76	76 - 81	81 - 86	86 - 91	91 - 96	96 - 101	101 - 106	106 - 111	111 - 116	116-121	121-127

INTERNATIONAL SIZES	XXS	XS	S	M	L	XL	XXL	3XL	4XL	5XL	6XL	7XL
FRENCH	38	40	42	44	46	48	50	52	54	56	58	60
ITALIAN	42	44	46	48	50	52	54	56	58	60	62	64
GERMAN	30	32	33	34	36	38	40	42	44	46	48	50
NETHERLANDS	30	32	33	34	36	38	40	42	44	46	48	50
SPAIN	38	40	42	44	46	48	50	52	54	56	58	60
USA	32	34	36	38	40	42	44	46	48	50	52	54

## WOMEN'S CLOTHING

	6	8	10	12	14	16
	XXS	XS	S	M	L	XL
TO FIT WAIST CM	24 - 26	26 - 28	28 - 30	30 - 32	32 - 34	34 - 36
TO FIT WAIST INCHES	61 - 66	66 - 71	71 - 76	76 - 81	81 - 86	86 - 91

INTERNATIONAL SIZES	6	8	10	12	14	16
FRENCH	34	36	38	40	42	44
ITALIAN	38	40	42	44	46	48
GERMAN	32	34	36	38	40	42
NETHERLANDS	32	34	36	38	40	42
SPAIN	34	36	38	40	42	44
USA	2	4	6	8	10	12

## CHILDREN'S CLOTHING

	XXS	XS	S	M	L	XL	2XL
CHEST	24"	26"	28"	30"	32"	34"	36"
AGE	1 - 2	3 - 4	5 - 6	7 - 8	9 - 11	12 - 13	13
HEIGHT (CM)	90	102	114	126	138	150	156

INTERNATIONAL SIZES	XXS	XS	S	M	L	XL	2XL
CHEST	24"	26"	28"	30"	32"	34"	36"
AGE	1 - 2	3 - 4	5 - 6	7 - 8	9 - 11	12 / 13	14/15
HEIGHT (CM)	80 - 92	98 - 104	110 - 116	122 - 128	134 - 146	152 - 158	164-170

# INTERNATIONAL SIZE GUIDES

## MEN

SIZE	UK	FR	DE	NL	ES	IT	USA
XS	XS	40	32	32	40	44	34
S	S	42	33	33	42	46	36
M	M	44	34	34	44	48	38
L	L	46	36	36	46	50	40
XL	XL	48	38	38	48	52	42
2XL	2XL	50	40	40	50	54	44
3XL	3XL	52	42	42	52	56	46
4XL	4XL	54	44	44	54	58	48
5XL	5XL	56	46	46	56	60	50

## WOMEN

SIZE	UK	FR	DE	NL	ES	IT	USA
XS	8	36	34	34	36	40	4
S	10	38	36	36	38	42	6
M	12	40	38	38	40	44	8
L	14	42	40	40	42	46	10
XL	16	44	42	42	44	46	12
2XL	18	46	44	44	46	50	14

## KIDS

SIZE	AGE	HEIGHT
XS	3/4 years	98-104cm
S	5/6 years	110-116cm
M	7/8 years	122-128cm
L	9/11 years	134-146cm
XL	12/13 years	152-158cm

# YOUR PRINT GUIDE



Printability is in the fibers of everything we do. Our products are thoughtfully designed with printing in mind, ensuring a seamless experience for every decorator. Whether it's our college fabric with a smooth 100% ringspun cotton face or our new 180gsm combed and ringspun cotton jersey, we prioritize providing the perfect canvas for your chosen decoration technique. Discover valuable insights and top tips in our online Print Guides.



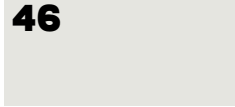




WE  
ARE  
**AWDis**

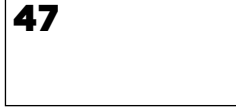


# OUR COLORS



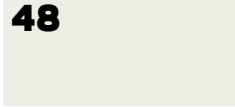
**46**

Ash



**47**

Arctic White



**48**

PFD (Prepared for Dye)



**49**

Surf Blue



**50**

Surf Ocean



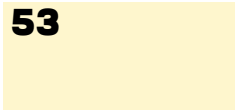
**51**

Surf Pink



**52**

Surf Purple



**53**

Surf Yellow



**54**

Jet Black /  
Fire Red



**55**

Jet Black/  
Gold



**56**

Jet Black /  
Heather Grey



**57**

Jet Black /  
Orange Crush



**58**

Jet Black /  
Sun Yellow



**59**

Jet Black /  
White



**60**

French Navy /  
Fire Red



**61**

French Navy /  
Heather Grey



**62**

French Navy /  
Sky Blue



**63**

Burgundy /  
Charcoal



**64**

Burgundy /  
Heather Grey



**65**

Charcoal /  
Jet Black



**66**

Charcoal /  
Orange Crush



**67**

Fire Red /  
Arctic White



**68**

Fire Red /  
Heather Grey



**69**

Fire Red /  
Jet Black



**70**

Heather Grey /  
Fire Red



**71**

Heather Grey /  
French Navy



**72**

Heather Grey /  
Jet Black



**73**

Oxford Navy /  
Heather Grey



**74**

Oxford Navy /  
White



**75**

Kelly Green /  
Arctic White



**76**

Kelly Green /  
Heather Grey



**77**

Purple /  
Heather Grey



**78**

Royal Blue /  
Arctic White



**79**

Royal Blue /  
Heather Grey



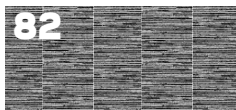
**80**

Sky Blue /  
Arctic White



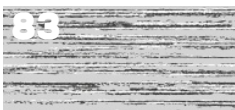
**81**

Hot Pink /  
Heather Grey



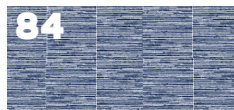
**82**

Black Slate Melange



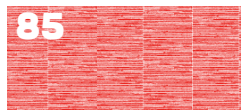
**83**

Grey Melange



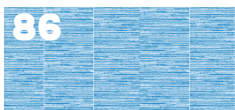
**84**

Navy Melange



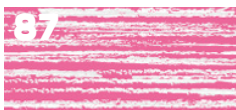
**85**

Red Melange



**86**

Royal Melange



**87**

Electric Pink Melange



**88**

Electric Orange



**89**

Electric Green



**90**

Electric Pink



**91**

Electric Yellow



**92**

City Nights



**93**

Fashion Green Camo



**94**

Green Camo



**95**

Grey Camo



**WE  
ARE  
COLOR**

**AWDis**



[www.AWDisUSA.com](http://www.AWDisUSA.com)

 @AWDisUSA

 @AWDisUSA